

REV. NO.	DATE	REVISIONS DESCRIPTION

**TRAFFIC SIGNAL LEGEND**

- (30') Mast Arm Pole (Length)
- (30') Combination Pole (Traffic Signal and Street Light)
- Pedestal Pole
- △ Traffic Signal Head
- △ Traffic Signal Head W/Backplate
- Pedestrian Signal Indication
- ⊕ EVP Detector
- ⊕ Radar Detector
- Size 1 Pull Box
- Size 2 Pull Box
- Traffic Signal Controller
- ▭ 6x30 Video Detection Zone
- ▭ 6x6 Advanced Video Detection Zone
- ◇ Video Detection Camera
- ◇ Advance Video Detection Camera
- ⊕ Luminaire on Combination Pole
- FO HDPE Fiber Optic Conduit with Locating Cable (Sized as Noted)
- PVC Conduit (Size as Noted)
- 1" HDPE Conduit
- 1.5" HDPE Conduit
- 2" HDPE Conduit
- 3" HDPE Conduit
- 4" HDPE Conduit
- ⊕ Electrical Service
- ◇ Construction Note
- Service Box Number
- △ Vehicular Signal Head No.
- Pedestrian Signal Head No.
- ⊕ Flat Sheet Street Name Sign
- ⊕ Flat Sheet Traffic Sign

**CONSTRUCTION NOTES:**

- 1 VIDEO DETECTION WILL BE PROVIDED FOR THIS INTERSECTION. THE DETECTOR ZONES SHOWN ON THE PAVEMENT ARE SHOWN ONLY TO DEPICT THE AREAS OF DETECTION FOR THE VIDEO DETECTION UNITS ALONG WITH THE PHASES THAT EACH VIDEO DETECTOR UNIT WILL CALL. VIDEO DETECTION CAMERA LOCATION(S) SHALL BE COORDINATED WITH MANUFACTURE AND OR MANUFACTURERS REPRESENTATION FOR FIELD LOCATIONS AND INITIAL SET UP.
- 2 CONTRACTOR IS TO REMOVE ALL EXISTING SIGNAL EQUIPMENT UNLESS OTHERWISE NOTED. CONTRACTOR SHALL REPAIR OR REPLACE EXISTING CONCRETE SIDEWALKS AND RAMPS AFFECTED BY REMOVED EQUIPMENT TO NEAREST SAW CUT.
- 3 REMOVE AND REPLACE EXISTING CABINET AND CONTROLLER.
- 4 POLE SHALL BE PROVIDED OVERHEAD SERVICE FOR TRAFFIC SIGNAL CABINET. FOLLOW ODOT STANDARDS FOR INSTALLATION INSTRUCTIONS (T-209).
- 5 COORDINATE WITH CITY FOR RECONNECTION TO EXISTING POWER SUPPLY.

**TABLE 1 SIGNAL HEADS**

SIGNAL HEAD NUMBER	NUMBER AND TYPE	MOUNTING	VISOR	BACKPLATE
2,7,8,13,18,19	6 ONE WAY (S-6)	MAST ARM	V-1	B-2
9,14,20	3 ONE WAY (S-6)	CLAMP	V-1	B-2
1,6,12,17	4 ONE WAY (S-13) L	MAST ARM	V-1	B-2
4,5,10,11,15,16,21,22	8 ONE WAY (S-20)	CLAMP	-	-
3	1 ONE WAY (S-19)R	MAST ARM	V-1	B-2

**TABLE 2 MAST ARMS & POLES**

LOCATION	TYPE	MAST ARMS LENGTHS	FOUNDATION
POLE B	COMBINATION	50' TS, 10'	S-55
POLE F	COMBINATION	40' TS, 10'	S-40
POLE D	COMBINATION	30' TS, 10'	S-40
POLE C	COMBINATION	40' TS, 10'	S-40
POLE E	PEDESTAL POLE	12' PED POLE	P-4

**TABLE 3 ELECTRICAL CABLE\***

ELECTRICAL CABLE TO CONTROLLER "A" LOCATION				
B-21c/5c	C-21c/5c	D-21c	E-5c/5c	F-21c/5c

\* SUPPLY VIDEO CABLE AS REQUIRED

**TABLE 4 MAST ARM MOUNTED SIGNS\*\***

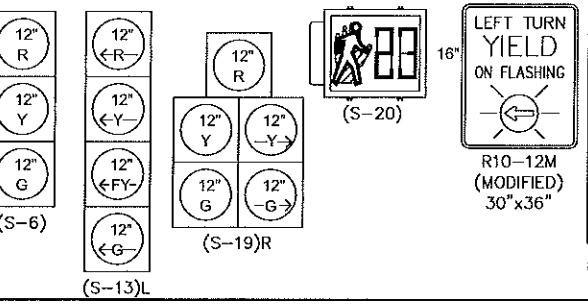
NAME	MESSAGE	POLE	QUANTITY	SIZE	AREA (S.F)	TOTAL AREA (S.F)
SP-2	W STEVE OWENS BLVD	B,C	2	96"x18"	12	24.0
SP-1	S MAIN STREET	D,F	2	48"x18"	6	12.0
R10-12M	LEFT TURN YIELD ON FLASHING YELLOW	B,C,D,F	4	30"x36"	7.5	30.0
SP-4	DOWNTOWN BUSINESS DISTRICT	C,F	2	42"x30"	8.75	17.5
SP-3	NO TRUCKS ON MAIN STREET	B,C,F	3	36"x30"	7.5	22.5
TOTAL					106.0	106.0

\*\* THE CONTRACTOR SHALL SUBMIT CUT SHEETS FOR ALL SIGNS TO BE USED ON THE PROJECT FOR APPROVAL PRIOR TO PURCHASE.

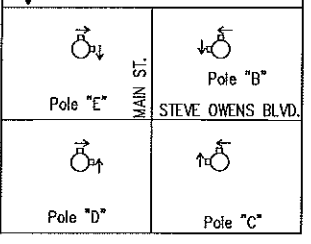
**GENERAL NOTES:**

- 1) CONTRACTOR SHALL FOLLOW ODOT STANDARDS FOR ALL EQUIPMENT INSTALLED.
- 2) TRAFFIC CONTROL FOR THE TRAFFIC SIGNAL REPLACEMENT SHALL CONSIST OF INSTALLATION OF STOP SIGNS ON ALL APPROACHES TO THE INTERSECTION. CONTRACTOR SHALL WORK IN AN EXPEDITED MANNER TO BRING THE TRAFFIC SIGNAL BACK ONLINE IN AS LITTLE TIME AS POSSIBLE.
- 3) POLE ARRANGEMENT DETAIL IS PROVIDED FOR INFORMATIONAL PURPOSES ONLY. THE PLACEMENT OF PUSH BUTTONS AND SIGNAL HEADS SHALL BE INSTALLED ON THE POLES SUCH THAT THE SIGNAL HEADS ARE VISIBLE FROM THE CROSSWALK AND THE PUSH BUTTONS ARE ACCESSIBLE (<10" REACH) FROM THE ADJACENT SIDEWALK RAMP LANDING AREA (4'x4' MIN.).
- 4) CITY TO PROVIDE UTILITY EASEMENT FOR PEDESTAL POLE BASE FOUNDATION.

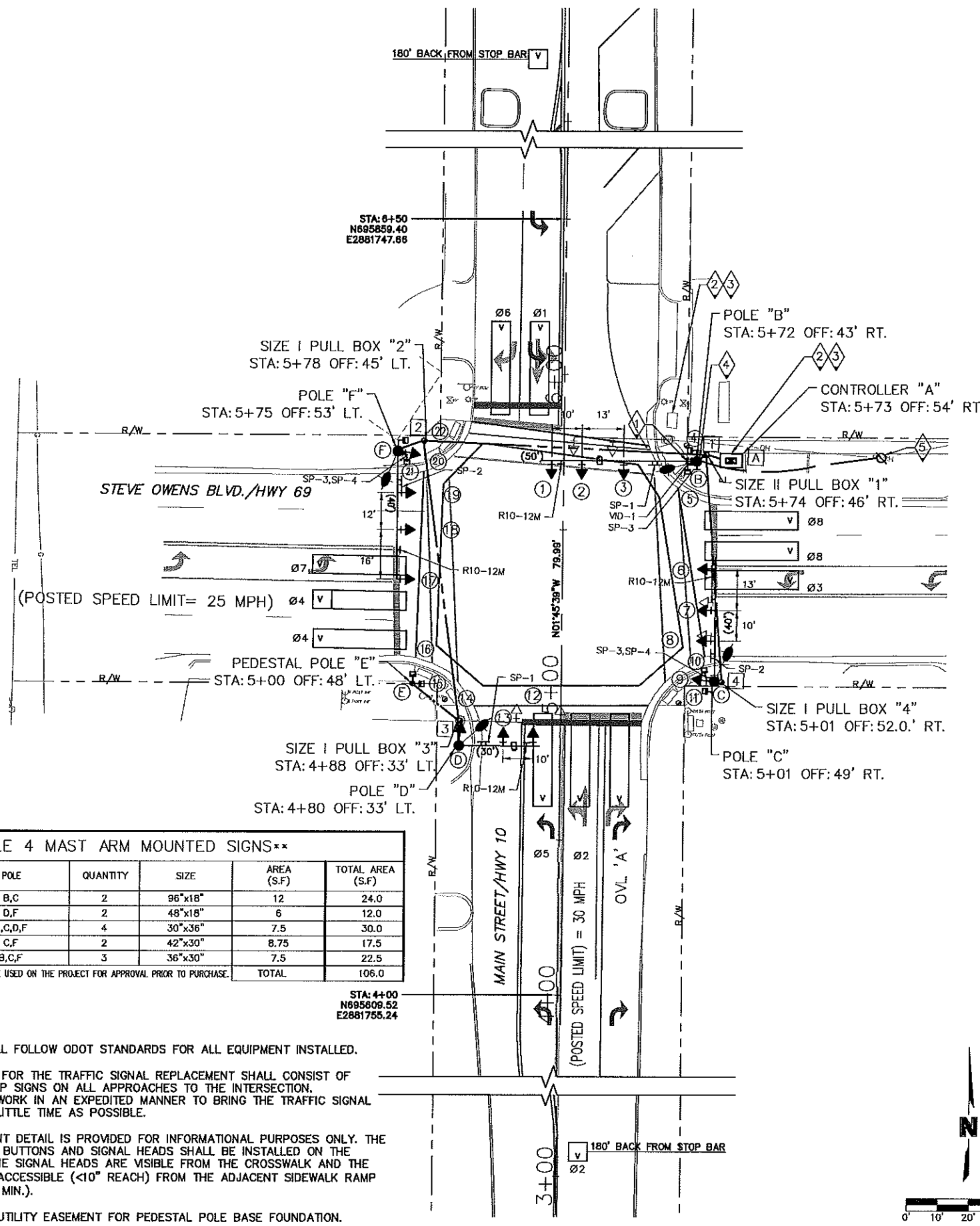
**SIGNAL FACES**



**Pushbutton Layout**



NOTE: HANDHOLE SHALL BE PLACED 225° CLOCKWISE FROM T.S. MASTARM



DWG: F:\2016\2001-2500\016-2300\40-Design\AutoCAD\W07 - Traffic Signal\Sheets\TRAFFIC SIGNAL PLAN\_62300\_W07.dwg  
 DATE: Jul 25, 2017 5:15pm  
 USER: tmchenry  
 F:\BLK\_62300\_W07  
 F:\TOPD\_62300  
 F:\BASE\_62300  
 F:\XBOU\_62300